

North Staffordshire Association of National Trust Members

Newsletter 77

and

April to August 2007

Programme



What's new in 2007? see page 16

ARRANGEMENTS FOR TRIPS AND MEETINGS

Coaches depart promptly from SCHOOL STREET, Newcastle, behind the Swimming Baths. Nearby long-stay parking. Should a member cancel their booking it is regretted that reimbursement is only possible if there is a waiting list. There will be a £2 per cheque handling charge. Members are requested not to find their own replacement. Non-members taking part in coach outings pay an additional £1. The committee has agreed that with rising numbers it is only fair that members should have priority when booking trips and holidays.

Members are asked to note that it is not possible for the coach to stop at places other than School Street to pick people up or drop them off on the outward or return journeys. The coach will not wait for members who are late, either at School Street or at other pick up points. Members are advised to take careful note of when or where they will be picked up. Anyone missing a coach will have no claim on the Association.

Cheques to be made payable to the “**N. Staffs. Association of NT Members**”. Due to current banking procedure, please note that cheques are not cleared until after an event. Members are asked to write a separate cheque for each event they book.

Note: The committee does not consider it proper that an event should incur a loss and therefore reserves the right to cancel should there be insufficient support.

IMPORTANT INFORMATION

The committee would like to urge all members to look carefully at what is involved in booking for an outing or a holiday. Consider the starting time, the length of the day, the amount of walking and stair-climbing involved, the number of times of getting on and off a coach, etc.

Please be sure you can manage all these independently and without help so that you can enjoy the day to the full by being able to participate in all aspects of the outing.

If you have not received acknowledgement of a booking within 2 weeks, please enquire as we believe that some bookings have recently gone astray in the post.

North Staffordshire Association of National Trust Members

NEWSLETTER No. 77

MARCH 2007

and April to August 2007 PROGRAMME

A NOTE FROM THE CHAIR:

During the winter months the committee is always busy planning the summer programme, which we enjoy doing. We have been very pleased recently to have valuable help from several Association members with planning and leading two of our most successful outings, and we hope their example will encourage others to suggest venues or activities and perhaps offer to help with the planning or with help on the day of the event. We hope the programme here appeals to you all - we have tried to make it as varied as possible in terms of venues, directions of travel, days of the week and prices.

Recently the Secretary received a report which outlines the National Trust's intention to improve communication with Associations and to give greater publicity to their existence and the benefits of membership. It is amazing that so many members of the Trust are still unaware of local Associations, so if you know of someone who belongs to the Trust but is not a member of an Association, do urge them to join us.

Another report summarised the proceedings of the AGM in Cheltenham, when a competition was held "**....to write down the most memorable experiences of the year**" in being a member of an Association. The following entry was the undisputed winner:

"I organised an outing (to raise money for the Trust) to Waterman's Hall which involved an optional extra lunch in a local city pub. Imagine my chagrin when I lost half the luncheon party who failed to follow their leader. Imagine, too, my fury when some complete stranger joined our group

and ate up someone else's meal! An experience which modified my organisational skills"

I'm so glad our outings leaders are more competent and our members more co-operative and obedient. We haven't lost anyone (or anyone's lunch) yet!

I look forward to seeing you on many of the summer outings.

Anne Anderton



Our association has strong links with Little Moreton Hall. David Watts, Property Manager at LMH, has sent us this insight.



“ People often ask me what we do during the closed season at Little Moreton Hall.

I suspect there is a feeling that we take it easy, put our feet up and sit out the cold weather. I can understand that view and it is easier because this is the time of year when we can catch up on all those things that we didn't get time to do when we were open; it is also the opportunity we need to finalise plans for the new season and undertake the tasks needed for opening in March.

The team here at Little Moreton Hall is really concerned to refresh the property and build upon its success; with that in mind we have refurbished the ticket office, freshly decorated and with new interpretation panels we should be ready for the first visitors on the 3rd March. As I write this we are in the middle of designing new signs for the property, including a property sign on the main road, and as for our events programme there has been considerable thought put into ensuring that we introduce new ideas to complement the already very successful events that exist.

The new season is not too far away and we are busily cleaning and preparing the Hall for an anticipated 65000 visitors throughout the season. We are all looking forward to opening our doors once again and welcoming old friends, particularly from the North Staffordshire Association of National Trust Members, as well as those people who walk up the drive for the first time, stop and stare at the South Range and wonder why we are still standing!”

David, thank you for this information. - Editor

REPORT ON TALKS AND VISITS

Monday 11th November 2006. Visit to Little Moreton Hall

A splendid two hours was spent at Little Moreton Hall on what, unexpectedly, became a very pleasant sunny afternoon after earlier torrential rain. Around 100 members were warmly welcomed in the Great Hall by David Watts, the Property Manager and his staff.

Tea, coffee and mince pies were consumed whilst David expressed his appreciation of all that the North Staffs Association has done financially for the Hall over the years. This has not only covered the recent purchases of a portable ramp giving disabled visitors access to the chapel and a space saving book stand in the shop, plus a small soft drinks refrigerator there, but also a surprise cheque to purchase much needed display boards.

Members then walked around admiring the attractive Christmas decorations and “Tudor” food in the ground floor rooms; wandered in the garden; made purchases in the shop and chatted to friends, old and new. A thoroughly enjoyable prelude to the Christmas season.

P Bentley.

Tuesday, 21st November 2006. Mark Parkinson: Rubbish - What Happens Next?

Mark Parkinson, Recycling Marketing Manager for Staffordshire County Council, explained the need for recycling based on both the shortage and expense of landfill sites and the need to conserve materials that can be re-used. Enthusiasm for the latter does need to be tempered by consideration of the costs of the recycling exercise, both the supply of containers and the collection of the waste and the financial and energy costs of reprocessing. If this exceeds the costs of producing the materials in the first place it might still be justified on disposal grounds. It turns out that recycling paper and glass is profitable and offsets some of the net costs of recycling plastics and garden waste.

The speaker pointed out that this area is near the bottom of the table for recycling but the writer is not sure that this is necessarily a bad thing as we have a very efficient incinerator which produces a considerable amount of electrical energy with negligible pollution. This is certainly more convenient for the householder who can put all waste into one container with a single weekly collection but many communities are unwilling to accept an

incinerator. A lively discussion followed in which it was pointed out that any customer charging policy that encouraged fly tipping should be avoided. Anne Anderton thanked the speaker for his excellent talk.

J Patrick Wilson

Saturday, 2nd December. Arley Hall

The four hours we spent at Arley Hall were sheer magic. Although there was an excellent craft fair in a marquee as well as beautiful grounds to explore in the sunshine, the highlight has got to be the floral display in the hall. Generously, the flower arrangements came out to meet us with a floral wreath on the door and two decorated pots at the top of the steps. The hallway was decorated in green, white and silver. A contemporary arrangement was to be found in the library: I suspect that few of us will be scouring the shops for plastic hoops to enclose in shiny blue sticky tape and even fewer looking for large grids from which to suspend twisted bamboo upside down. I admit that I cannot see myself threading beads on grasses but how wonderful to see it done. There were some spectacular arrangements, both contemporary and traditional, and also some quite modest pieces. There were hundreds of roses, lilies and orchids - all a little over the top, but fitting so well into the superb background. Interestingly, there were arrangements that would be appropriate for any time of the year and not specifically for Christmas and colour choices were used in an innovative way. All in all, a breathtaking display.

Our thanks go to Sue Pitt who led the visit with gentle authority.

Mary Yardley

Thursday 25th January Tony Busfield: 36 Unusual and Antique Objects

About 70 members braved the January cold and I'm sure felt themselves well rewarded with such an entertaining evening. Tony Busfield had brought, from his own extensive collection of tools, implements, useful and unusual objects from the past, a selection for us to try and identify. Most of us were mystified, intrigued and even rather aghast at the appearance of one or two objects as we speculated wildly on what they were called, used for or made of.

Tony then explained the real nature and use of all the items, giving us in between some glimpses into his own and his wife's family backgrounds and

anecdotes about their more eccentric ancestors. Pat and Gillian Wilson were commendable winners, with a score of 21; the rest of the company felt they had done well if they had made an educated guess at 4 or 5. Nobody identified the bunion stretcher but I think we shall all recognise one instantly in future!



SUMMER PROGRAMME

Wednesday 18th April 2007 Coach Outing to Stratford-upon-Avon

Explore and learn about some historic and interesting parts of Stratford which tourists often miss. We shall arrive at 11.00 am at the town-centre Holiday Inn for coffee and biscuits (included). Our two guides will meet us there and we shall enjoy a walking tour lasting about 1 1/2 hours. While the distance covered may not be great, it will involve being on one's feet for the duration - appropriate footwear please. The walk will end at the Dirty Duck inn, opposite the Royal Shakespeare Theatre - NARROW STEPS TO ENTRANCE. This is the celebrated 'watering hole' frequently used by many of the famous actors who have appeared at the theatre and where we shall have a two-course lunch (included).

The afternoon will be free for shopping , with some discount vouchers, exploring the antiques shops or indulging in afternoon tea in one of the many pleasant tea-shops.

Depart School Street, 9.15 am; Return approx. 6.00 pm

Cost £25.00 (Non-members £26.00) includes coach, gratuities, coffee, tour guides, 2-course lunch. PLEASE INDICATE MENU CHOICES on booking form.

Please apply to: Miss S. Pitt, 196, Dimsdale Parade West, Wolstanton, ST5 8EA Tel: 01782 566871 enclosing cheque and SAE

Bookings close April 12th.

Supporter Anne Anderton

LUNCH MENU: A - Fish, Chips & Peas; B - Cajun Spiced Chicken Breast, Salad & Chips; C - Walnut and Pesto Ravioli & Garlic Bread

D - Strawberries & Cream; E - Clotted Cream Ice-cream

Tea/Coffee

EARLY BOOKING STRONGLY RECOMMENDED

Sunday 22nd April 2007 11.00 am Car Outing to Sinai Park, Shobnall, Burton-on-Trent. Max 40 members

Sinai Park is included in Simon Jenkins' book England's 1000 Best Houses. It is described as a "semi-derelict hall house under restoration". Mrs. Kate Newton acquired Sinai in 1994 and she has rebuilt and occupies one wing. The house was an outpost of a Burton Monastery of C1500 and passed to the Paget family at the Dissolution, since when it has suffered much neglect and had many uses, until eventually the great oak beams of its roof fell. The house is dry moated with a small 18th century bridge. Simon Jenkins writes "These buildings need saints and Sinai is lucky to have found one." He also writes "The place was and still is dangerous". Members should wear sound footwear and heed any instructions given.

A guided tour will last approximately 1½ hours. After the visit members may wish to visit the Coors Visitors Centre and the Museum of Brewing in Burton-on-Trent under their own steam. Please telephone Coors 0845 6000 598 to confirm opening hours and entrance fees.

Members should arrive at Sinai Park not later than 11 00 a.m. Parking is available. Directions on application.

Cost £5.00 per member.

Refreshments are not provided.

Apply to Peter Moxon, Millstone House, Butterton, Newcastle-under-Lyme, Staffordshire ST5 4EB Tel:01782 616337 enclosing cheque and SAE.

Closing date Thursday 5th April.

Saturday 28th April 2007 Ramble The River Churnet and Dimmingsdale

We will meet at the Forestry Commission Car Park next to the Ramblers' Retreat at 10.00 am. — Grid reference 063432

The walk crosses the River Churnet, passing the chained oak in Barbary Gutter, across Farley Park (within sound of Alton Towers!) to Mather's Wood. We then follow the course of the river and then descend to a picnic area with toilets before a steep climb up through the woodland of Moss's Banks. Passing Dimmingsdale youth hostel, we descend into Dimmingsdale and return to the Ramblers' Retreat where snacks or full meals can be obtained for lunch.

The walk is about 4½ miles with 1 climb and some stiles, including 'squeezer' stiles. (The climb can be avoided by walking directly back along a disused railway line at the halfway stage)

Suitable for families and dogs.

Cost £1 per person (£1.50 for non-members) - payable on the day. Contact Cath Hayes, 60 Church Lane, Ipstones, Staffs. ST10 2LF Tel: 01538 266704 for further details enclosing a SAE please. Enquiries will be answered after April 18th.

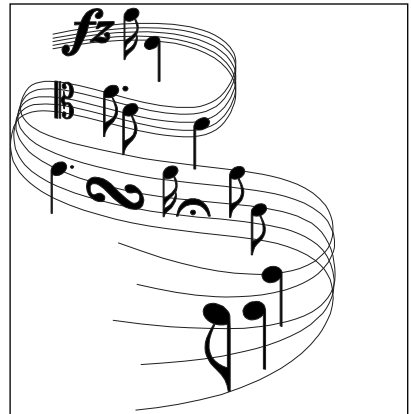
Saturday 5th May 2007 Coach Outing Churches of South Holland

Lincolnshire has one of the finest collections of medieval churches of any county in England, many concentrated around Spalding in the area known as South Holland. At this time of year they hold magnificent flower festivals using the tulips and spring flowers for which this area is famous.

Highly recommended by one of our members, our journey of exploration will be led by an experienced blue badge guide, Ernie Hall, who will take us to visit 4 or 5 of the most spectacular churches together with an entertaining and informative tour of the local area. Refreshments to sustain us on the expedition will be provided on arrival; a light lunch has been organised in Long Sutton Church, and tea and cakes will be available during the afternoon.

Please note this is a long day, with a lengthy coach drive and an early start.

Depart: 8.00 am from School Street, Newcastle; return approx 7.00 pm subject to traffic conditions.



This year's Flower Festival theme at

Long Sutton Church is ***Musical***

Inspirations

Cost £25 (Non members £26) including coach (with on board toilet), guiding fees, morning coffee and lunch and drivers gratuity.

Apply to Mrs P Moore, 26 Parkway, Trentham ST4 8AG Tel: 01782 657645
Please enclose cheque and SAE.

Bookings close Wednesday 25th April.

ANNUAL GENERAL MEETING Wednesday 9th May 2007
North Staffs Conference Centre, Hartshill 7.00 pm.

The AGM will start promptly at 7.00pm after which we shall have an illustrated talk.

CHRIS COPP: PHOTOGRAPHS OF ALL KINDS

Chris is from Leek and works in the Staffordshire museum service at Shugborough. He will feature a unique photographic archive from the McCann family. We have never had a talk on photographs so this will have a special appeal as it has a strong local connection.

The McCann family were commercial photographers in Uttoxeter and after their shop closed in 1976 the family donated over 12,000 negatives and prints to the county museum service. They are a fascinating record of the town of Uttoxeter and because of its pre-eminence as a livestock market, the McCanns became nationally known as photographers of agricultural events – shows, sales, hunts, etc. Their pictures appeared regularly in many magazines and this archive is a wonderful record of local life.

The talk will be followed by our usual buffet supper with tea or coffee at which Chris will be our guest. The bar will open at 6.30pm.

AGM 7.00pm Talk 7.30PM Buffet 8.30PM

Any new members especially welcome.

NB Please submit any NOMINATIONS FOR THE COMMITTEE to the Secretary, Audrey Aubrey, before April 12th (See note at end of enclosed Agenda)

For the £...6.50.....Supper Tickets please apply on the special form before Tuesday 1st May to:

Miss Audrey Aubrey, 10 Paris Avenue, Newcastle, Staffs ST5 2RQ Tel: 01782 623214.

Tuesday 22nd May 2007 Car Outing to Walcot Hall, Lydbury North near Bishop's Castle, Shropshire 11.00 am Max 40 members.

Walcot Hall, also included in Simon Jenkins' 1000 Best English Houses, was built by Clive of India in 1763, Shropshire being the traditional home of the Clive Family and in that county he eventually became Lord Lieutenant.

Sir William Chambers designed the house, the interior of which spreads out from a huge entrance hall and staircase and he also designed the ballroom which is separate from the hall and was allegedly built to house a giant Indian carpet.

Clive died in 1774 and was buried in the Church in Moreton Say near Market Drayton, the Shropshire town in which he was born. The Hall remained in the ownership of the Clive family until 1933

The guided tour will last about 1½ hours. Members may enjoy a walk around the grounds after the tour.

After the visit, members may, under their own steam, visit Stokesay Castle' (Tel: 01588 672544) and St. John the Baptist Church, or Acton Scott Working Farm (Tel: 01694 781306) both only a short drive from Walcot.

Members should arrive at Walcot Hall not later than 11.00 a.m.. Parking available. Coffee and cakes on arrival. Directions on application.

Cost £7.00 per member to include coffee and cakes on arrival.

Apply to Peter Moxon, Millstone House, Butterton, Newcastle-under-Lyme, Staffordshire. ST5 4EB Tel:01782 616337 enclosing cheque and SAE.

Closing date Friday 4th May 2007

Tuesday 5th June 2007- Coach Outing to Donington-le-Heath Manor House Museum and Snibston Discovery Park, Leicestershire

Donington-le-Heath Manor House claims to be one of the oldest houses in Britain. Dating from about 1290 and a family home for nearly 700 years, it has been restored by Leicestershire County Council to display as much as possible of the medieval building, and to house an exhibition of ancient furniture and artefacts. The garden is 17th century and contains many interesting plants fashionable at that time. An ancient barn now houses a restaurant, and the site is surrounded by newly planted woodlands.

Given fine weather it is a splendid place for picnics, but light lunches can be obtained in the barn.

On arrival, coffee and biscuits will be served. After lunch we shall make the short journey to Snibston Discovery Park, the site of an early Stephenson railway line and colliery, and now an award-winning exhibition hall with displays of transport, science and engineering, many of them interactive. There is also a fashion gallery, the largest outside London, showing the changing fashions from 1750 to the present. The surrounding park has colliery buildings, a colliery railway, and walks to fishing lakes, an arboretum and a nature reserve. Refreshments are available.

Depart from School Street at 9.30 a.m., returning to Newcastle by 6.30 p.m.

Cost £17.50 (Non-members £18.50) including coach, entrance fees, morning coffee and driver's gratuity.

Apply to Mr K. Walker, 49 Stockwood Road, Newcastle, ST5 3LQ Tel. 01782 613813 enclosing cheque and SAE.

Closing date for applications is Friday 25th May.

Sunday 10th June 2007 Ramble Hidden treasures of Sandon Park

A gentle Sunday morning ramble through Sandon Park, passing rock formations, Sandon Church, a monument rescued from Trentham Gardens and Pitt (the Younger)'s Column.

We will meet at 9.45 at the Greyhound Inn at Burston, near Stone (plenty of car parking available). The walk takes in gentle hills across farmland and parkland, with far-reaching views, then returns along the canal tow-path to the Greyhound Inn, where we have tables reserved for lunch.

About 5½ miles, a dozen stiles 2 to 2½ hours in total. Suitable for families and dogs.

Cost £1 per person (£1.50 for non-members) - payable on the day. Contact: Richard Adams, Gables End, Holly Bank, Trentham, Stoke-on-Trent ST4 8FT. 01782 646054 SAE please

Thursday 14th June 2007 2.30 pm Car Outing to Peover Hall, Knutsford, Cheshire. Max 40 members

Peover Hall is the home of Mr. Randle Brooks which is included in Simon Jenkins' book England's 1000 Best Houses.

The house is described as a working house which means that the Brooks family respect its history but are content to alter it to suit their needs.

It is a structure of much charm, part two-storied with gables and part three-storied with parapet and mullion and transom windows.

As the estate agents say, "viewing is essential". Members will enjoy a guided tour of the house lasting about 1½ hours followed by Cream Tea. Members may view the stables built in 1654 (similar to those at Whitmore Hall), and amble around the gardens and grounds. The adjacent church will be open for members to visit.

Members are advised that Peover is known as "The House of Stairs" and are warned that there are a lot of stairs, and many loose and worn carpets, some on uneven floors.

Members may wish to visit Jodrell Bank Visitors Centre and Arboretum which is only a short distance from Peover in the morning under their own steam.

Members should arrive at Peover Hall not later than 2.30 p.m. Ample parking. Directions upon application.

Cost £10.00 per member including admission, cream tea and a donation to the Church.

Apply to Peter Moxon, Millstone House, Butterton, Newcastle-under-Lyme, Staffordshire ST5 4EB Tel:01782 616337 enclosing cheque and SAE.

Closing Date: Friday 25th May 2007

Tuesday 26th June 2007 7.00 pm Car Outing An Evening at Wollerton Old Hall Garden, Nr Market Drayton

A stroll in the garden followed by supper.

In design and layout, this is a garden in the classic English mode. Within a little over three acres, there are a series of beautifully planted garden "rooms" full of scent and colour, grouped around a 16th century half-timbered house (not open).

This is an exclusive private visit to one of the best gardens in the area followed by a delicious supper served in the tea room, or, weather permitting, in the

garden itself. Although many members will be familiar with Wollerton Old Hall Garden, this is literally a chance to see it in a new light.

Supper menu: Home-made savoury flan served with new potatoes and a selection of salads

Meringue with strawberries and cream **or** Crème Brûlée with raspberries.

Filter coffee **or** pot of tea.

The garden is licensed to sell wine. *Please indicate your choice of sweet on the booking form.

Cost £18.00 per person to include admission to the garden and supper. Directions with booking.

Apply to Mrs P Moore, 26 Parkway, Trentham, ST4 8AE Tel: 01782 657645 enclosing cheque and SAE.

Closing Date Monday 18th June 2007.

Saturday 30th June Coach Outing to Birkenhead for a Manchester Ship Canal Cruise to Salford Quays

Mersey Ferries run a regular cruise along the Manchester Ship Canal throughout the summer and we have arranged to join the trip on Saturday, 30th June. This runs from the Seacombe Ferry Terminal in Birkenhead all the way along the 35-mile stretch of Canal to the centre of Salford Quays.

The cruise lasts approximately 6 hours and, as the brochure describes it: "A truly memorable journey ... which includes a lively commentary giving a revealing insight into the facts, the history and the drama of one of Britain's major waterways. The



cruises take in spectacular scenery leaving passengers with an awe-inspiring sense of how its construction shaped the City of Manchester and the North West of England"

The boats are newly refurbished, hold several

hundred people and can take wheelchairs, although only on the main deck. There is a licensed bar and (light) food servery but it's probably best to take your own food for lunch.

The cruise is one way and our coach will collect us after our arrival at Salford Quays. *For more information about the cruises visit*

www.merseyferries.co.uk. Depart 8.15 am from School Street, Newcastle.
Return by approximately 6.00 pm..

Cost: £39.50 (Non-members £40.50) includes coach, cruise and coach driver's gratuity.

Apply to David and Cynthia Dumbelton, 32 The Lea, Trentham, Stoke-on-Trent ST4 8DY. Tel: 01782 641765, Please enclose cheque and SAE.

PLEASE BOOK ASAP as we cannot reserve places on this cruise — only make a firm booking - therefore bookings close by 21st April.

Please note early booking closure for this trip.

Friday July 13th 2007 Coach Outing to Welshpool and Chirk Castle(NT)

Ignore the implications of the date and enjoy a day in the delightful countryside of mid-Wales. We shall arrive at The Old Station, Welshpool, at about 11.00am. This building is reminiscent of a French chateau and has been converted into an exclusive shopping area with many different outlets, boutiques and craft shops. You can even shop on the old platform! The large Carriage Restaurant upstairs serves coffees, snacks and lunches.

Within 2 or 3 mins walk is the Shropshire Union canal, with a museum, boats and a picnic area for anyone taking their own lunch. The town is a few more minutes away and has many interesting shops and restaurants.

We shall leave at 1.30pm for the drive to Chirk Castle (NT CARDS NEEDED) This is the last Welsh castle from Edward I's reign yet is still lived in. The East wing is newly opened this year and has exhibitions, a Victorian library and information about Pugin. We shall have an afternoon tea (included) of scone with jam and cream and tea and there will be a chance to visit the Farm Shop and the second-hand bookshop on our return to the coach park. STAIRS, WALKING ON COBBLES AND A WALK TO THE COACH PARK ARE INVOLVED IN THIS TRIP.

Depart School Street 9.30am; return approx 6.30pm

Cost £14.50 (Non-members £15.50. Those without NT cards must pay entrance to Castle) includes coach, driver's gratuity and afternoon tea.

Please apply to: Mrs. A. Anderton, 14, Berne Ave, Newcastle, ST5 2QJ Tel: 01782 613024 enclosing SAE.

Closing date for applications, July 1st.

Wednesday 25th July 2007 2.00 pm. Car Outing to Staunton Harold Hall, Ashby de la Zouch, Leicestershire Max 40 members

Staunton Harold Hall is also listed in Simon Jenkins' '1000 Best English Houses' and is the home of Mr. John Blunt, the father of Richard, who lives at Clifton Hall which members visited last summer.

Members will enjoy a guided tour of the house, which is described as serenely Palladian, built piecemeal over the 18th century with a north front of c 1700 and a formal east front looking out over the park.

The house became a Cheshire Home and sadly institutionalised but Mr. Blunt has lavished much loving care upon the Hall and grounds which are now restored to their former glory.

Members may visit the adjacent Church which was built during the Commonwealth, erected by Sir Robert Shirley, an ardent royalist, and now belongs to the National Trust. The Church interior retains its original 17th century cushions, carved woodwork and painted ceiling.

Members may wish to visit the adjacent Ferrers Art and Craft Centre and the garden centre, where refreshments may also be purchased.

Members should meet at the Church from where the visit begins by 2.00 p.m. allowing about 10 minutes to walk from the car parks. Members will walk across to the Hall at about 2.30 p.m. for the tour of the hall.

Directions and car parking arrangements upon application

Cost £10.00 per member including admission to hall, tea and biscuits and a donation to the church.

Apply to Peter Moxon, Millstone House, Butterton, Newcastle-under-Lyme, Staffordshire ST5 4EB Tel:01782 616337 enclosing cheque and SAE.

Closing date Friday 6th July 2007

NOTE Please bring your NATIONAL TRUST CARDS for access into the Church.

Thursday 2nd August 2007 Coach Outing to Stoneleigh Abbey and Baddesley Clinton (NT)

We shall arrive at Stoneleigh at approx. 11.00 am for coffee and biscuits (included) then have a guided tour of this splendidly restored building, re-opened in 2003 after being closed for 40 years. Past visitors included Jane Austen and Queen Victoria, who admired the rococo plasterwork in the

Saloon, described as "one of the greatest interiors of Georgian England". In the chapel is an organ reputed to have been played by Handel. There should be time to explore the grounds.

After a short journey, lunch will be taken at Baddesley Clinton (NT CARDS NEEDED) where members will have the option of eating in the Barn Restaurant (at own cost) or taking a picnic. Admission to the house is by timed ticket but once inside we shall be able to explore its Elizabethan interior at our own pace. Once a refuge for persecuted Catholics, Baddesley Clinton has no fewer than three priest holes. There is also a delightful garden, with stewponds, and a lake walk.

PLEASE NOTE THAT THERE ARE MANY STAIRS WITH HANDRAIL TO THE UPPER FLOORS OF THE HOUSE.

Depart School Street 9.15 am returning to Newcastle at approx. 6.30pm

Cost £17 (£18 Non-members Those without NT cards must pay entrance to house) including coach fare, admission to Stoneleigh, coffee, guided tour and driver's gratuity.

Please apply to: Mrs. R. Wheat, 12, West Avenue, Newcastle, ST5 0NB Tel: 01782 616113 enclosing SAE

Closing date for applications - July 23rd



Baddesley Clinton

Friday 31st August 2007 11.00 am Car Outing to Jesse Shirley's Etruscan Bone and Flint Mill, Etruria Vale Road, Shelton Stoke-on-Trent. Max 40 members

Shirley's Mill was built for Jesse Shirley in 1857 to supply bone and flint to the Pottery Industry. The family firm is still in business on the site using modern machinery. However the original range of buildings alongside the canal ceased to be used in 1972. It has now been restored and visitors can see how bone and flint were ground in the 19th century and also see one of the oldest steam engines still in working order.

The Beam Engine is in full working order and is usually in steam one weekend (Sat and Sun) each month from April until December. The Association has been offered a private visit on the Friday prior to the usual weekend steaming.

The Programme for the day will be:

- 11.00 a . m. Arrive
- Tour of the site to include the Exhibition Hall, Old Hospital and Dispensary, House of Recovery, Check Office and Warehouse and the Blacksmith's forge.
- 12.30 p.m. Lunch break. Members bring own picnic, Members will be offered Coffee, Tea and Orange juice at no cost.
- 1.30 p.m. View Mill in operation.

Members should note that there are unfenced canals with deep water on the site and uneven surfaces and steps inside and outside the buildings. Also there is moving machinery. It is suggested that members do not wear their "Sunday Best" as parts of the site and buildings are dusty and dirty.

Members should arrive not later than 11 00 am. Car parking available. Bring your own picnic. Directions upon application.

Costs: £5.00 per member to include tea, coffee or orange juice

Apply to Peter Moxon, Millstone House, Butterton, Newcastle-under-Lyme, Staffordshire ST5 4EB Tel:01782 616337 enclosing cheque and SAE.

Closing date: Monday 12th August 2007

WHAT'S NEW IN 2007 ?

"...there is nothing new under the sun." BUT it is some time since we have had -

✓Two holiday trips in the year

✓Rambles

✓Such a large and varied Summer programme

Summary of 2007 Summer Programme	
Wednesday 18th April	Stratford-upon-Avon
Sunday 22nd April	Sinai Park
Saturday 28th April	Ramble River Churnet and Dimmingsdale
Saturday 5th May	Churches of South Holland
Wednesday 9th May	Annual General Meeting
13th - 18th May	Cornwall Holiday
Tuesday 22nd May	Walcott Hall
Tuesday 5th June	Donington-le-Heath and Snibston
Sunday 10th June	Ramble Sandon Park
Thursday 14th June	Peover Hall
Tuesday 26th June	Wollerton Old Hall Garden
Saturday 30th June	Canal Cruise
Friday 13th July	Welshpool and Chirk Castle
Wednesday 25th July	Staunton Harold Hall
Thursday 2nd August	Stoneleigh Abbey and Baddesley Clinton
Friday 31st August	Jesse Shirley's Etruscan Bone and Flint Mill
Dates for Your Diary	
Wed. 26th September	Loton Park Car Outing
5th - 8th October	London Holiday
Wednesday 7th November	Talk
Monday 17th December	Christmas Event

COMMITTEE 2006 - 2007

CHAIRMAN

*Anne Anderton

14, Berne Avenue, Newcastle ST5 2QJ

01782-613024

VICE-CHAIRMAN

*Penny Moore

26 Parkway, Trentham, Stoke on Trent ST4 8AG

01782-657645

HON. SECRETARY

Audrey Aubrey

10 Paris Avenue, Newcastle ST5 2RQ

01782-623214

HON. TREASURER

Madeleine Hopley

5 Sedbergh Close, Newcastle ST5 3JQ

01782-618821

COMMITTEE

*Peter Moxon (Car Outings Organiser)

Millstone House, Butterton, Newcastle ST5 4EB

01782-616337

Bernice Mulliner (Minutes Secretary)

67 Chester Crescent, Newcastle ST5 3RR

01782-617211

Keith Walker (Membership Secretary)

49 Stockwood Road, Newcastle ST5 3LQ

01782-613813

John Beaumont (Newsletter Editor)

4 Barnsdale Close, Trentham, Stoke on Trent ST4 8TT

01782-642618 email ajbeaumont@tesco.net

* Member of the Programme Planning Sub-Committee